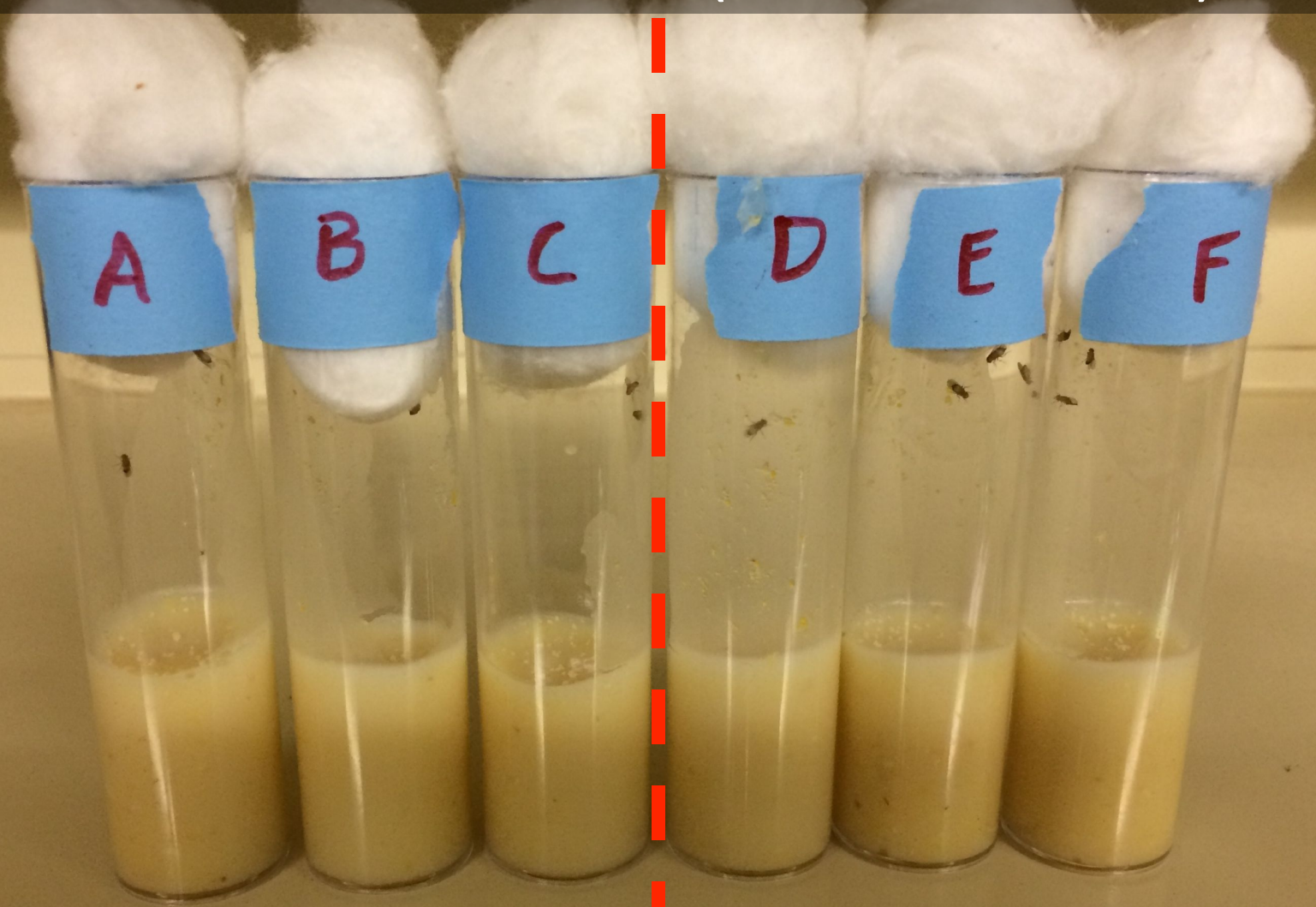


# Start of Small Vial Trial (Module 1 and 3)

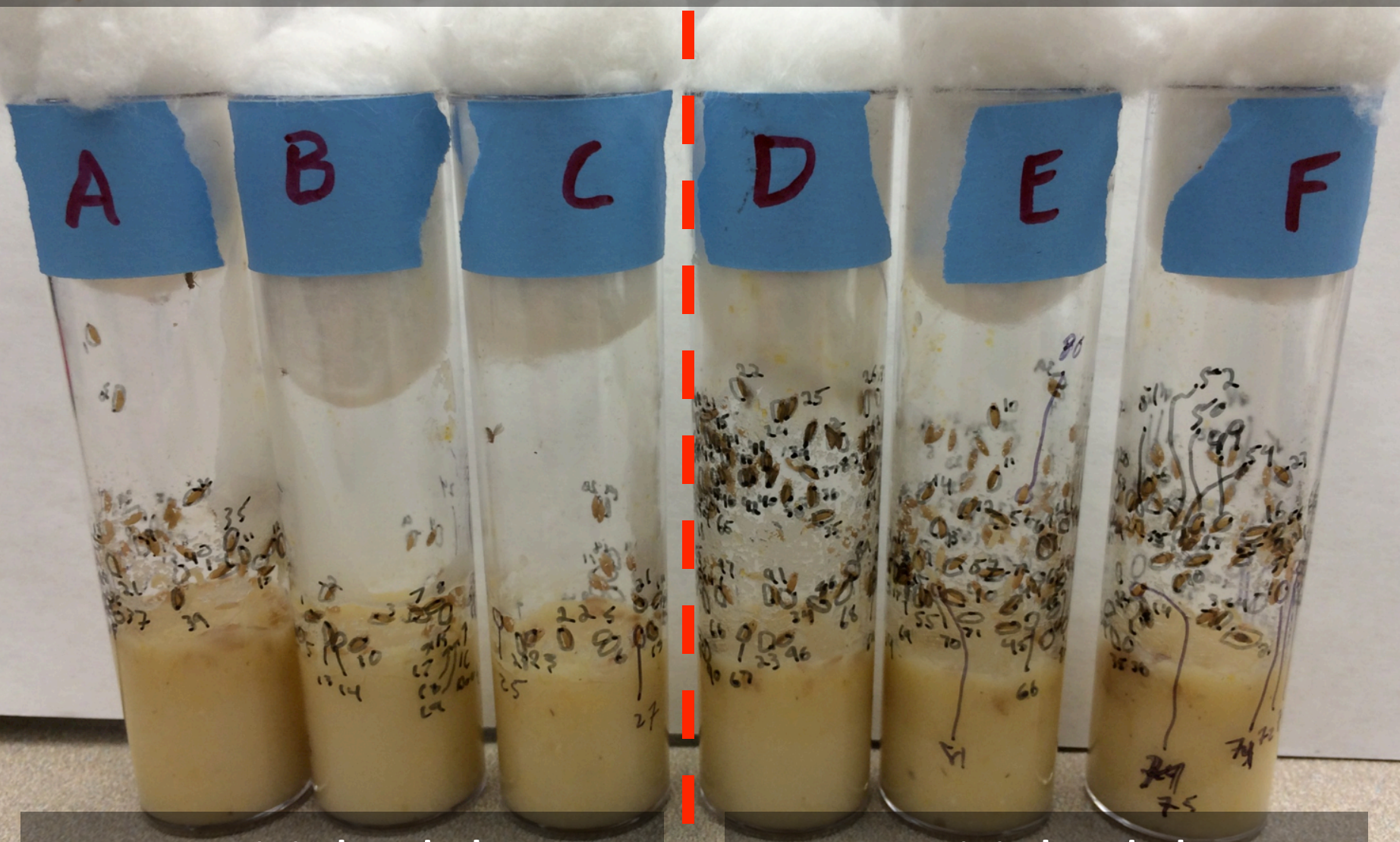


2 Initial Adults  
(1 Male and 1 Female)

4 Initial Adults  
(1 Male and 3 Females)



# Middle of Small Vial Trial (Module 1 and 3)

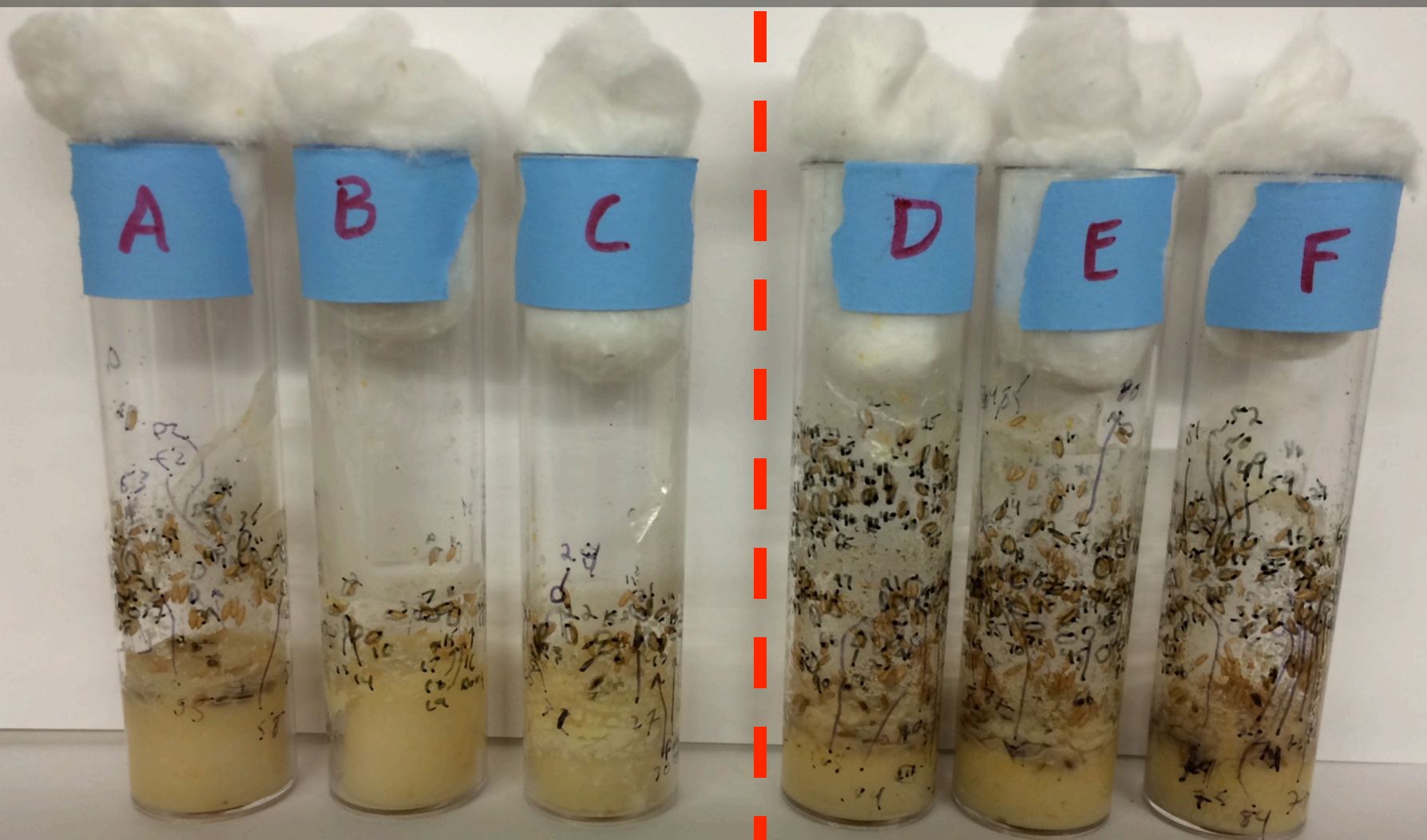


2 Initial Adults  
(1 Male and 1 Female)

4 Initial Adults  
(1 Male and 3 Females)



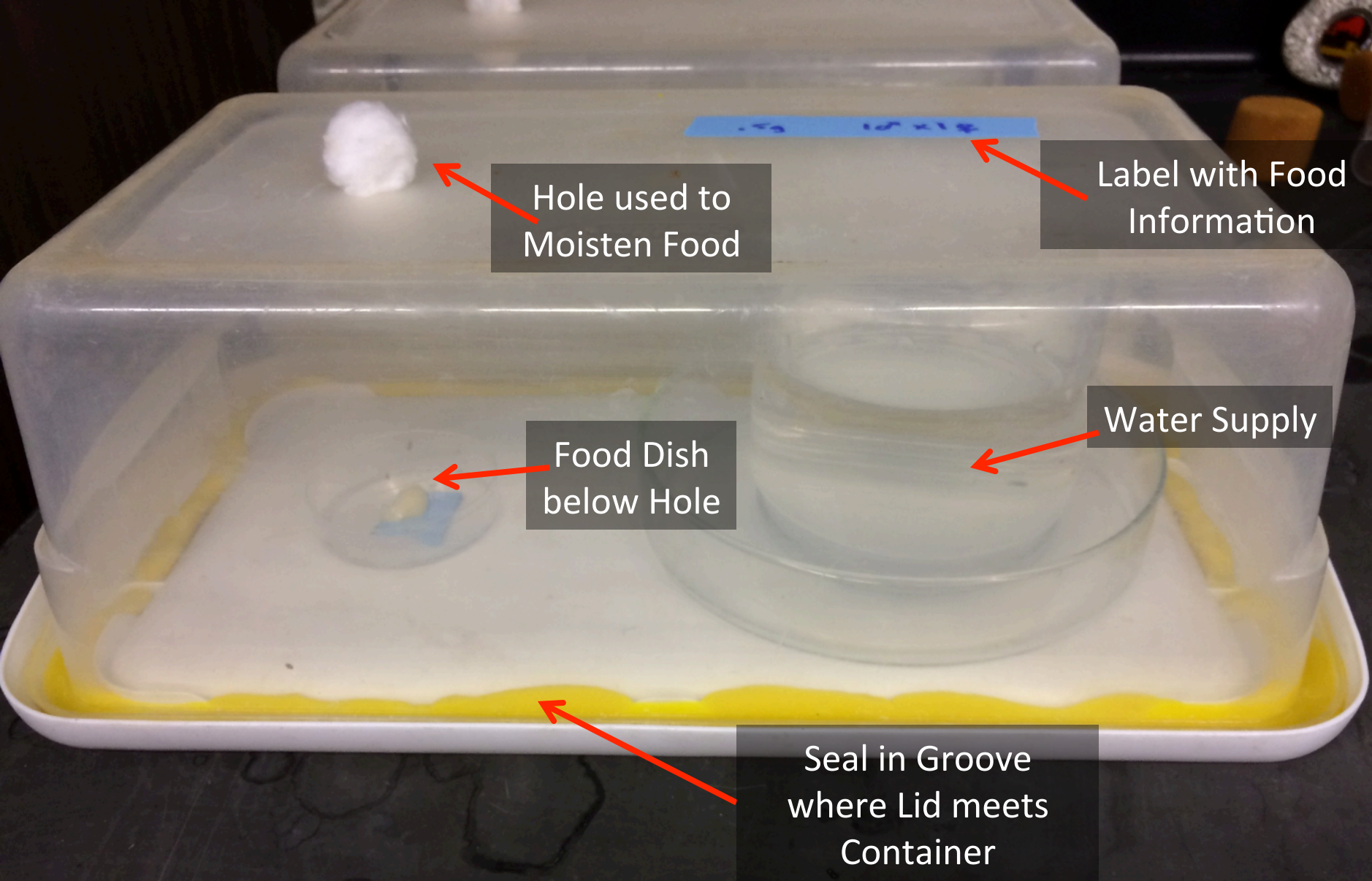
# End of Small Vial Trial (Module 1 and 3)



2 Initial Adults  
(1 Male and 1 Female)

4 Initial Adults  
(1 Male and 3 Females)





Start of Trials with Varying Food Amounts (Module 2)





Food Dish

Remaining Food

Dead Adult

End of Trials with Varying Food Amounts (Module 2)